

A46 Newark Bypass

TR010065/APP/6.2

6.2 Environmental Statement

Figure 9.4 Bedrock Geology

APFP Regulation 5(2)(a)

Planning Act 2008

Infrastructure Planning (Applications: Prescribed Forms and
Procedure) Regulations 2009

Volume 6

April 2024

Infrastructure Planning

Planning Act 2008

**The Infrastructure Planning
(Applications: Prescribed Forms
and Procedure) Regulations 2009**

A46 Newark Bypass

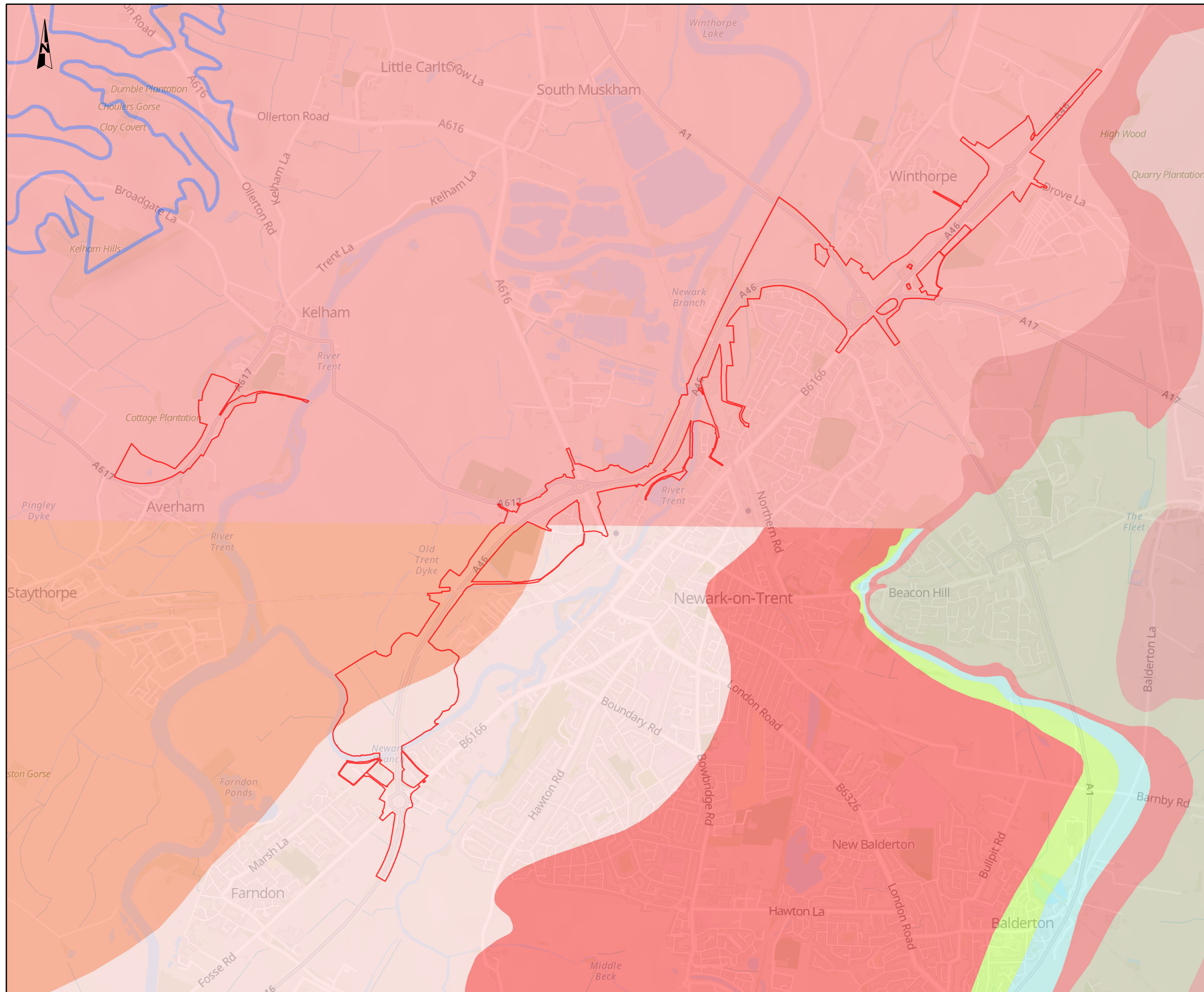
Development Consent Order 202[x]

ENVIRONMENTAL STATEMENT

Figure 9.4 Bedrock Geology

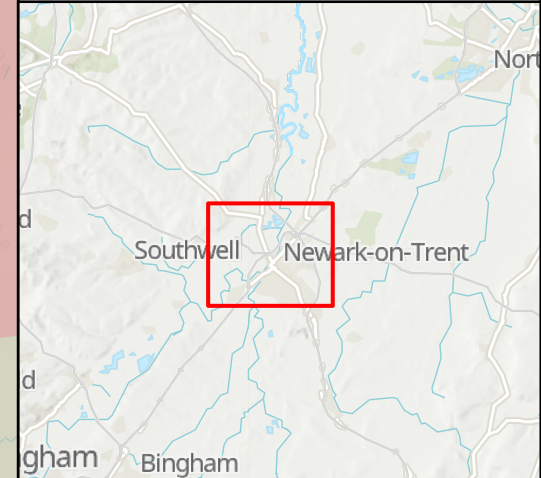
Regulation Number:	Regulation 5(2)(a)
Planning Inspectorate Scheme Reference	TR010065
Application Document Reference	TR010065/APP/6.2
Author:	A46 Newark Bypass Project Team, National Highways

Version	Date	Status of Version
Rev 1	April 2024	DCO Application



NOTES
 Source
 Contains public sector information licensed under the Open Government Licence v3.0.
 Contains British Geological Survey materials © UKRI 2023.
 Service Layer Credits
 Contains OS data © Crown Copyright and database right 2023
 Contains data from OS Zoomstack

- KEY TO SYMBOLS**
- Order Limits
 - Barnby Member - Mudstone
 - Barnstone Member - Mudstone and limestone, interbedded
 - Blue Anchor Formation - Mudstone
 - Branscombe Mudstone Formation - Mudstone
 - Cotham Member - Mudstone
 - Edwalton Member - Mudstone
 - Gunthorpe Member - Mudstone
 - Mercia Mudstone Group - Mudstone
 - Scunthorpe Mudstone Formation - Mudstone and limestone, interbedded
 - Westbury Formation - Mudstone
 - Mercia Mudstone Group - Siltstone, dolomitic



C01	08/12/23	DCO APPLICATION	BH	NR	HF
REV.	DATE	AMENDMENT DETAILS	ORIG	CHK'D	APP'D
CLIENT					
PURPOSE OF ISSUE					
DCO APPLICATION					
DEVELOPMENT CONSENT ORDER NUMBER					
TR010065					
PROJECT TITLE					
A46 NEWARK BYPASS					
DRAWING TITLE					
Figure 9.4 Bedrock Geology					
ORIGINAL SIZE	A3	SCALE	1:25,000		
DRAWING NUMBER	HE 551478	ORIGINATOR	SKAG	VOLUME	EGT
LOCATION	CONWI_CONW	DR	LE	00005	PROJECT REF NO. HE551478
		TYPE	ROLE	NUMBER	REVISION C01

© Skanska
 This document is issued for the party which commissioned it and for specific purposes connected with the captioned project only. It should not be relied upon by any other party or used for any other purpose.
 We accept no responsibility for the consequences of this document being relied upon by any other party, or being used for any other purpose, or containing any error or omission which is due to an error or omission in data supplied to us by other parties.

